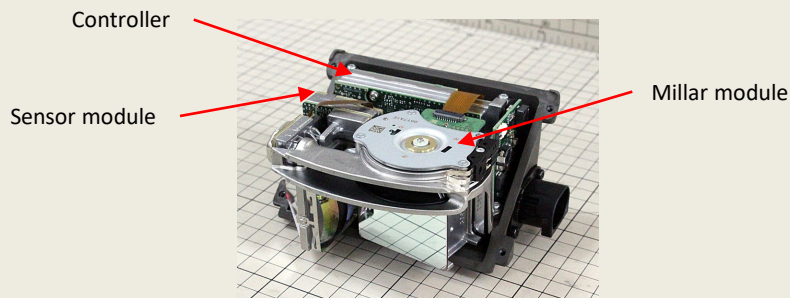


## AUDI A8 LiDAR (SCALA) PRINTED CIRCUIT BOARD TEARDOWN REPORT

**June 2018.** LTEC Corporation released a teardown report of the Audi A8 LiDAR(SCALA) manufactured by Valeo. The . Valeo SCALA® system scans the area in front of the vehicle and detects vehicles, motorbikes, pedestrians and static obstacles. Using the collected data, the scanner enables the creation of a map of the environment allowing it to analyze and anticipate events around the vehicle.



**LiDAR module**



**After removing cover**

### Features

- Dimensions: (W)107.3mm x (L) 60.4mm x (D) 101.7mm
- Weight: 760g
- Horizontal angle of view: 145°
- Detection range: 80m
- Scanning is done by moving the mirror.

The 15-page report includes teardown, X-ray image and main components list.

**Priced to sell at \$600.00**

[info@ltecusa.com](mailto:info@ltecusa.com)

17G-0037-1